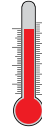


MCH Metal Clad Modular Hopper Surface Heater

Product Highlights

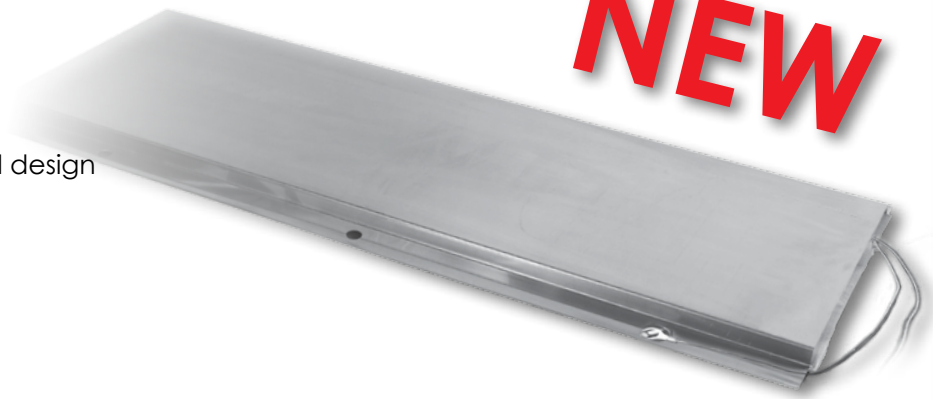
- ✓ Ideal for ESP (Electrostatic Precipitator) hoppers, baghouse hoppers, and material and dust-collector hoppers
- ✓ System of modular heaters meets your heat-up and total wattage requirements
- ✓ Easy stud-welding installation
- ✓ Meets all IEEE 1069 standards
- ✓ Simple, one-piece stainless steel design
- ✓ Exceptional durability
- ✓ 5-year warranty
- ✓  **FM APPROVED**

Temperatures up to



1000°F (538°C)

NEW



Specifications:

- Maximum exposure temperature: 1000°F (538°C)
- Power density range: 0.75 watts/ in² (.001 watts/mm²) to 3.0 watts/ in² (.005 watts/mm²)
- Patented grounded heating element; meets NEC 427.23
- Dielectric strength of over 2000 volts
- Choice of voltage: 120, 208, 240, 277, 480, or 600VAC
- Power Leads: 12ft (3.6m) long, moisture resistant, high-temperature stainless steel overbraid, with bare-wire connection

Modular Size Chart in (mm)	
Width	Length
3 (76)	12 (305)
6 (152)	12 (305)
12 (305)	12 (305)
12 (305)	24 (610)
12 (305)	36 (914)
12 (305)	48 (1220)

Metal Clad Modular Hopper Surface Heater Break-down



Stainless Steel Protective Shell

- Protects heater from outdoor conditions
- Superior rigidity enhances heater-to-surface contact
- Corrosion and rust resistant

Modular Blanket Hopper Heater

- High-temperature construction
- Energy-efficient 3/4" (19mm) thick fiberglass insulation reduces required wattage and improves heat-up time

Multi-Stranded Heating Element

- Maximum uniformity, durability, and safety
- BriskHeat® exclusive core technology

Ordering Information:

Contact your local representative or BriskHeat® for a quotation and application assistance.

IMPORTANT: Temperature controller is required for this product. See pages 80 through 100 for options.

HOPPER
HEATERS